



MONTHLY MEMBERSHIP PROGRESS REPORT

District 325A2

Results as of: 05/31/2018

GMT: KHAGENDRA SITLAULA

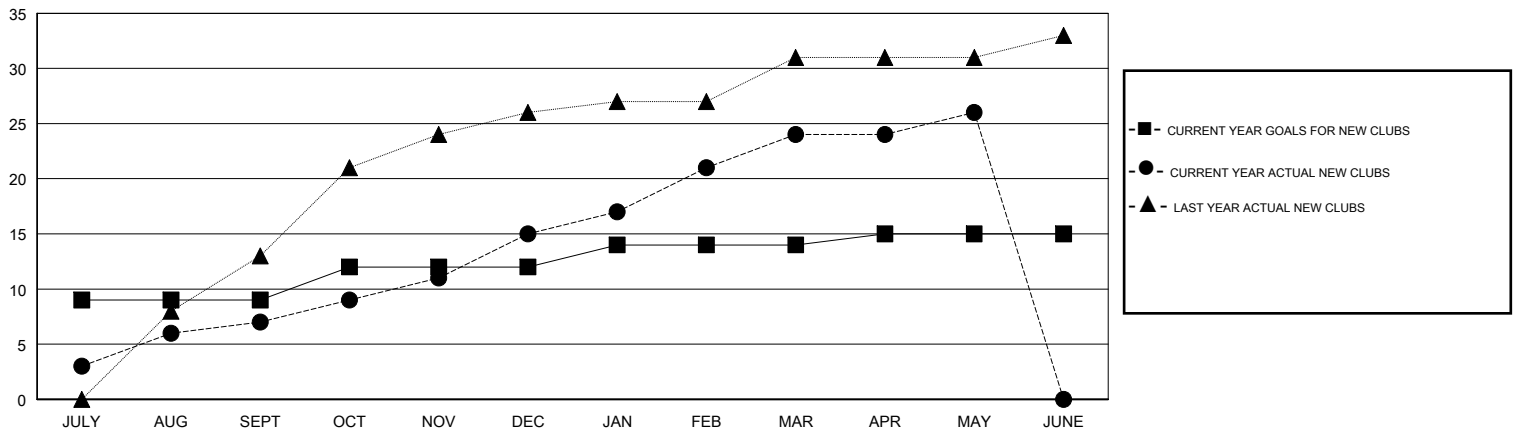
LOCATION NEPAL

GMT CA

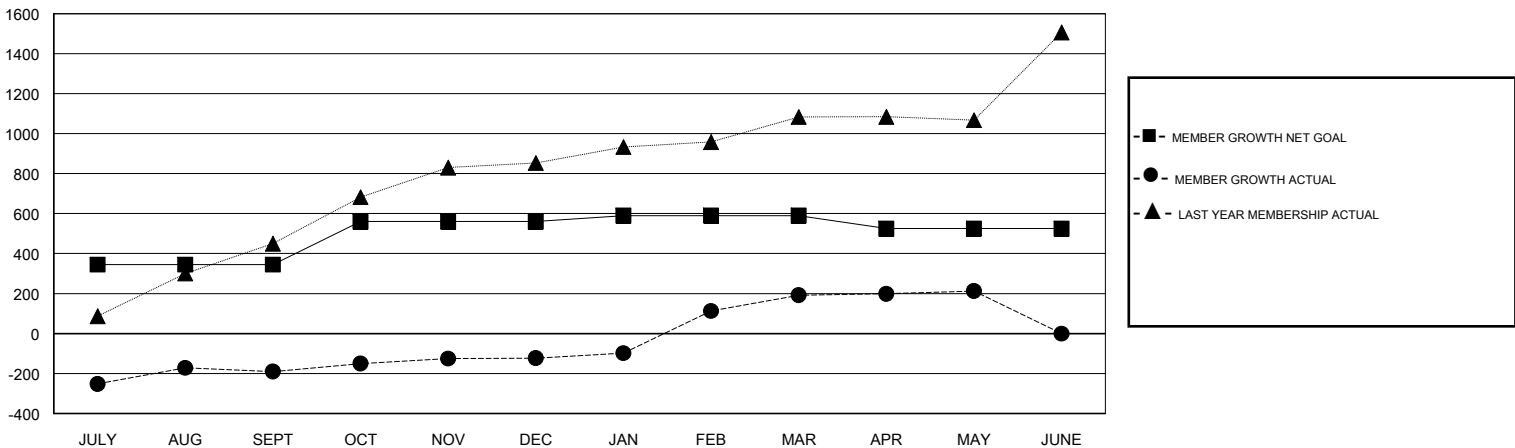
Clubs			
RESULTS FOR 2017-2018			
QUARTER	NEW CLUB GOAL	NEW CLUBS	DROPPED CLUBS
JULY/AUG/SEPT	9	7	0
OCT/NOV/DEC	3	8	1
JAN/FEB/MAR	2	9	0
APR/MAY/JUNE	1	2	0

Members			
RESULTS FOR 2017-2018			
QUARTER	MEMBER GROWTH NET GOAL	MEMBER GROWTH ACTUAL	DROPPED MEMBERS ACTUAL (including transfers)
JULY/AUG/SEPT	345	306	466
OCT/NOV/DEC	215	360	265
JAN/FEB/MAR	30	445	115
APR/MAY/JUNE	-65	148	125

GOALS AND ACTUAL NEW CLUBS CUMULATIVE



GOALS AND ACTUAL MEMBERS CUMULATIVE



DROPPED CLUBS: 1	105 CLUBS OF 181 ADDED 1 OR MORE NEW MEMBERS	<u>GENDER DISTRIBUTION</u>
DROPPED MEMBERS	CLICK HERE FOR CUMULATIVE MEMBERSHIP DATA	MALE 3,705 (73.03%)
DECEASED 2		FEMALE 1,368 (26.97%)
CLUB CANCELLED 4		Women Percentage Fiscal Year Goal: 25%
OTHER 965		TOTAL FAMILY UNIT MEMBERS 2,639
TOTAL 971		FAMILY MEMBERS PAYING HALF DUES 1,585